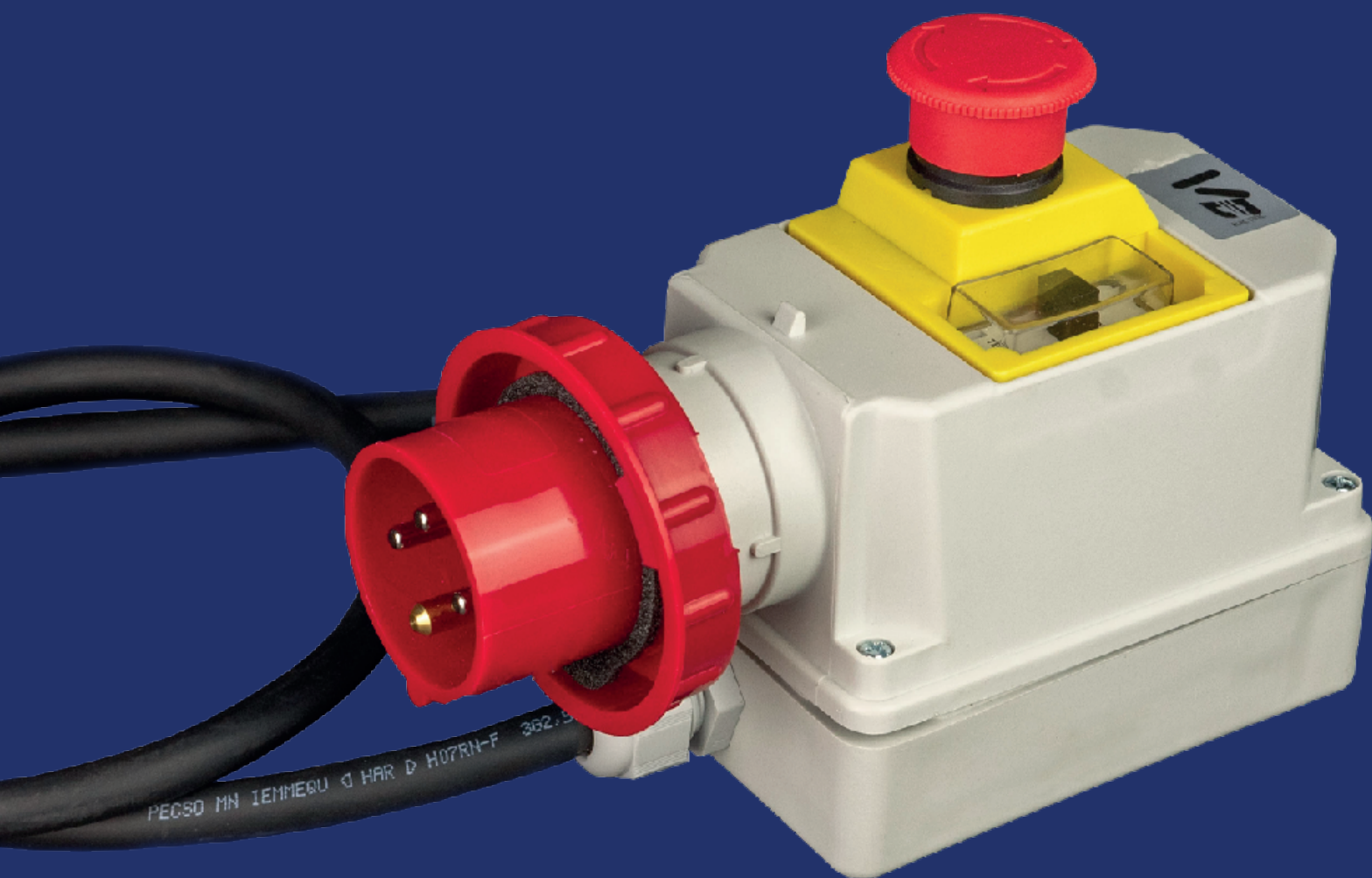


# SALVAMOTORI

*MOTOR PROTECTION PLUGS*

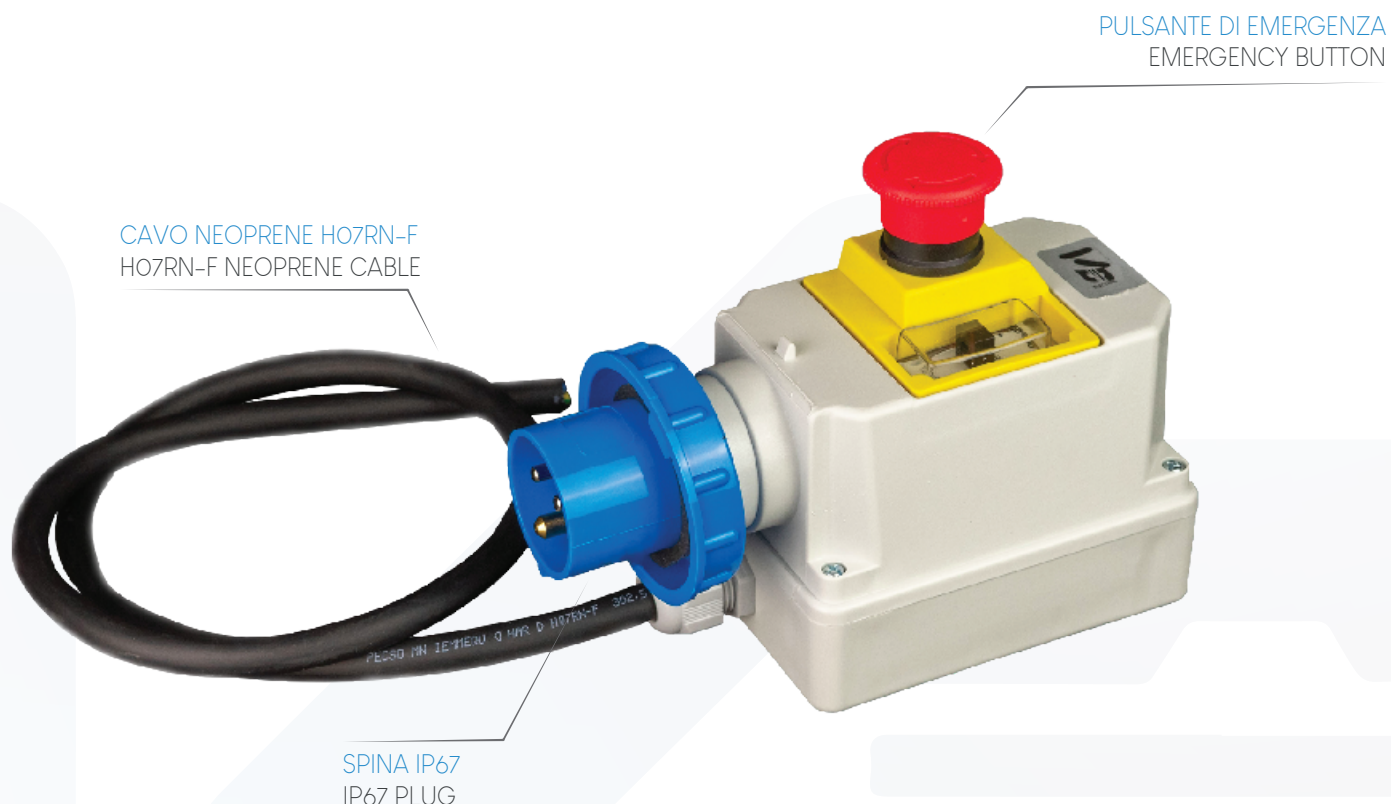


### SALVAMOTORE MONOFASE/TRIFASE IP 65

- Salvamotore monofase/trifase in cassetta
- Grado di protezione IP65
- Cavo neoprene H07RN-F
- Pulsante di emergenza
- Spina CEE
- Salvamotore magnetotermico con bobina di minimo

### IP65 SINGLE-PHASE/THREE-PHASE MOTOR PROTECTION

- Single-phase/three-phase motor protection in box
- IP65 degree protection
- H07RN-F neoprene cable
- Emergency button
- CEE plug
- Magnetothermic motor protection with minimum reel



# SALVAMOTORI MONOFASE IP65 – 230V

MONOPHASE IP65 MOTOR  
PROTECTION

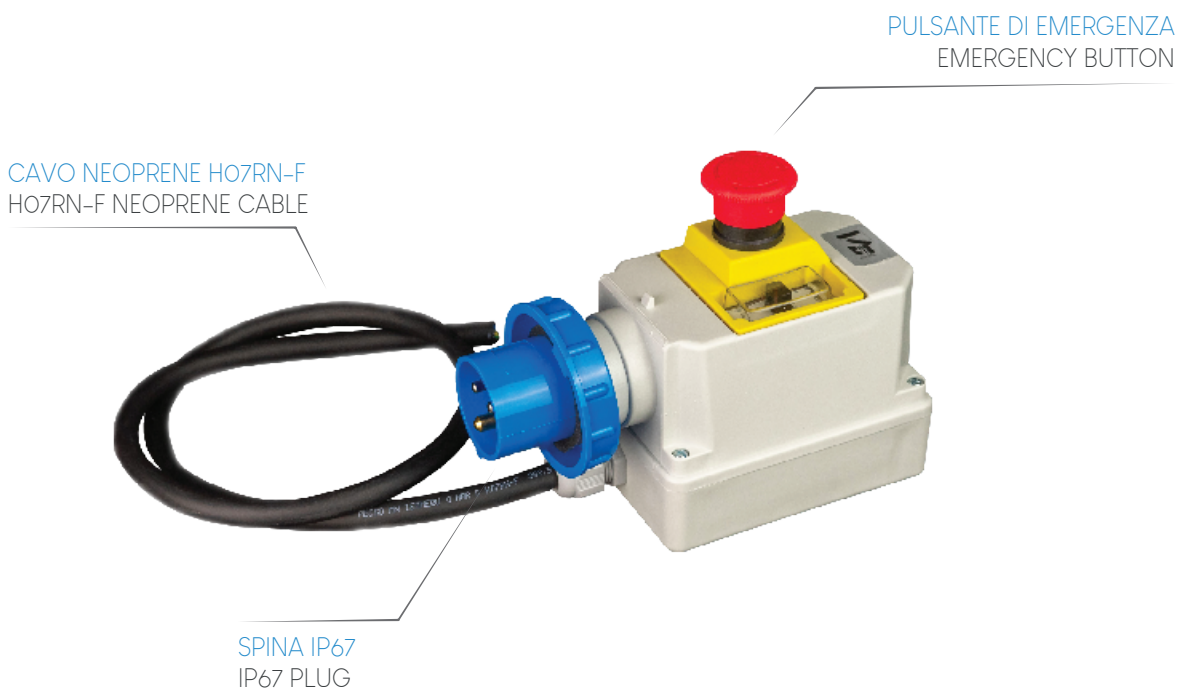


## SALVAMOTORE MONOFASE IP 65

- Salvamotore monofase in cassetta
- Grado di protezione IP65
- Cavo neoprene H07RN-F
- Pulsante di emergenza
- Spina CEE
- Salvamotore magnetotermico con bobina di minimo

## IP65 SINGLE-PHASE MOTOR PROTECTION

- Single-phase motor protection in box
- IP65 degree protection
- H07RN-F neoprene cable
- Emergency button
- CEE plug
- Magnetothermic motor protection with minimum reel



SERIE PULSANTE	Codice Code	Regolazione di corrente Current regulation	Tensione Nominale Rated Voltage	Spina Plug	Pezzi in imballo Pcs. in packaging
	VB-SP2,5/4A-220	2,5/4A	230 V	2P+E 16A IP67	1
	VB-SP4/6,3A-220	4/6,3A	230 V	2P+E 16A IP67	1
	VB-SP6,3/10A-220	6,3/10A	230 V	2P+E 16A IP67	1
	VB-SP10/16A-220	10/16A	230 V	2P+E 16A IP67	1
	VB-SP16/20A-220	16/20A	230 V	2P+E 16A IP67	1
	VB-SP20/25A-220	20/25A	230 V	2P+E 16A IP67	1

BUTTON SERIES

# SALVAMOTORI TRIFASE IP65 - 400V

THREE-PHASE IP65 MOTOR PROTECTION

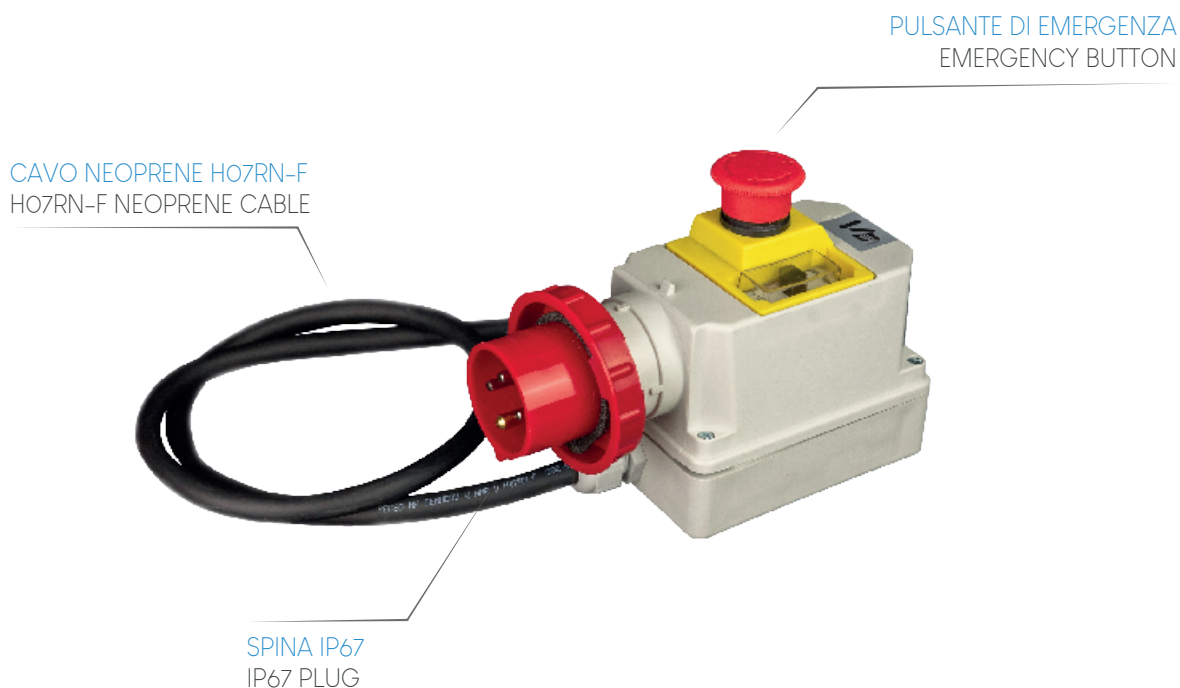


## SALVAMOTORE TRIFASE IP 65

- Salvamotore trifase in cassetta
- Grado di protezione IP65
- Cavo neoprene H07RN-F
- Pulsante di emergenza
- Spina CEE
- Salvamotore magnetotermico con bobina di minimo

## IP65 THREE-PHASE MOTOR PROTECTION

- Three-phase motor protection in box
- IP65 degree protection
- H07RN-F neoprene cable
- Emergency button
- CEE plug
- Magnetothermic motor protection with minimum reel



SERIE PULSANTE	Codice Code	Regolazione di corrente Current regulation	Tensione Nominale Rated Voltage	Spina Plug	Pezzi in imballo Pcs. in packaging
	VB-SP2,5/4A-380	2,5/4A	400 V	3P+E 16A IP67	1
	VB-SP4/6,3A-380	4/6,3A	400 V	3P+E 16A IP67	1
	VB-SP6,3/10A-380	6,3/10A	400 V	3P+E 16A IP67	1
	VB-SP10/16A-380	10/16A	400 V	3P+E 16A IP67	1
	VB-SP16/20A-380	16/20A	400 V	3P+E 16A IP67	1
	VB-SP20/25A-380	20/25A	400 V	3P+E 16A IP67	1

BUTTON SERIES

# SALVAMOTORI IP65 - 230/400V

IP65 MOTOR PROTECTION - 230/400V



## SALVAMOTORE MONOFASE IP 65

- Salvamotore monofase in cassetta
- Spina CEE 2P+T IP67
- Salvamotore magnetotermico
- Bobina di minima
- Pulsante a Fungo
- Cavo motore

## IP65 SINGLE-PHASE MOTOR PROTECTION

- Single-phase motor protection in box
- CEE plug 2P+E IP 67
- Magnetothermic motor protection
- Minimum reel
- Emergency button
- Motor cable



## SALVAMOTORE TRIFASE IP 65

- Salvamotore trifase in cassetta
- Spina CEE 3P+T/3P+N+T IP67
- Salvamotore magnetotermico
- Bobina di minima
- Pulsante a Fungo
- Cavo motore

## IP65 THREE-PHASE MOTOR PROTECTION

- Three-phase motor protection in box
- CEE plug 3P+E/3P+N+E IP 67
- Magnetothermic motor protection
- Minimum reel
- Emergency button
- Motor cable



# SALVAMOTORI IP65 - 230/400V

IP65 MOTOR PROTECTION - 230/400V



MONOFASE	Codice Code	Regolazione di corrente Current regulation	Tensione Nominale Rated Voltage	Spina Plug	Pezzi in imballo Pcs. in packaging	SINGLE PHASE
	VB-SP2,5/4A-220N	2,5/4A	230 V	2P+E 16A IP67	1	
	VB-SP4/6,3A-220N	4/6,3A	230 V	2P+E 16A IP67	1	
	VB-SP6,3/10A-220N	6,3/10A	230 V	2P+E 16A IP67	1	
	VB-SP10/16A-220N	10/16A	230 V	2P+E 16A IP67	1	
	VB-SP16/20A-220N	16/20A	230 V	2P+E 16A IP67	1	
	VB-SP20/25A-220N	20/25A	230 V	2P+E 16A IP67	1	

TRIFASE - 4 POLI	Codice Code	Regolazione di corrente Current regulation	Tensione Nominale Rated Voltage	Spina Plug	Pezzi in imballo Pcs. in packaging	THREE-PHASE - 4 POLES
	VB-SP2,5/4A-380N	2,5/4A	400 V	3P+E 16A IP67	1	
	VB-SP4/6,3A-380N	4/6,3A	400 V	3P+E 16A IP67	1	
	VB-SP6,3/10A-380N	6,3/10A	400 V	3P+E 16A IP67	1	
	VB-SP10/16A-380N	10/16A	400 V	3P+E 16A IP67	1	
	VB-SP16/20A-380N	16/20A	400 V	3P+E 16A IP67	1	
	VB-SP20/25A-380N	20/25A	400 V	3P+E 16A IP67	1	

TRIFASE - 5 POLI	Codice Code	Regolazione di corrente Current regulation	Tensione Nominale Rated Voltage	Spina Plug	Pezzi in imballo Pcs. in packaging	THREE-PHASE - 5 POLES
	VB-SP2,5/4A-380-5PN	2,5/4A	400 V	3P+N+E 16A IP67	1	
	VB-SP4/6,3A-380-5PN	4/6,3A	400 V	3P+N+E 16A IP67	1	
	VB-SP6,3/10A-380-5PN	6,3/10A	400 V	3P+N+E 16A IP67	1	
	VB-SP10/16A-380-5PN	10/16A	400 V	3P+N+E 16A IP67	1	
	VB-SP16/20A-380-5PN	16/20A	400 V	3P+N+E 16A IP67	1	
	VB-SP20/25A-380-5PN	20/25A	400 V	3P+N+E 16A IP67	1	

# RICAMBI SALVAMOTORI

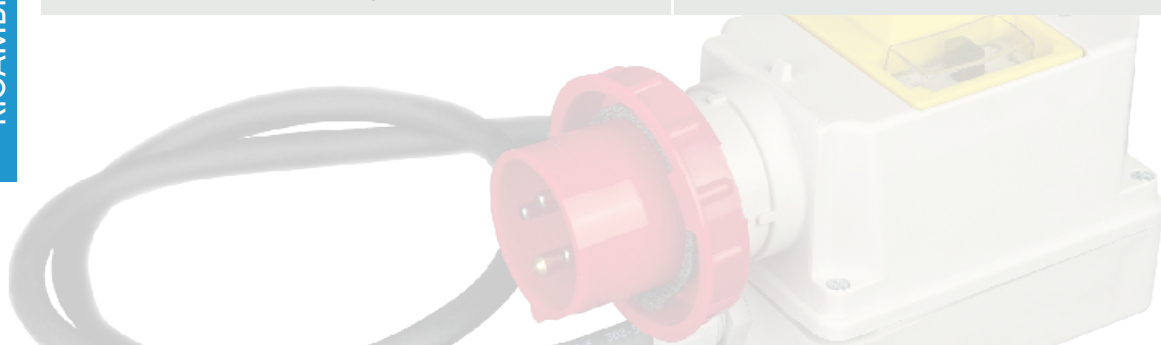
SPARE PARTS FOR MOTOR PROTECTION  
PLUG



RICAMBIO SCATOLA

Codice Code	Spina Plug
VB-S/B-220	2P+E 230V
VB-S/B-380	3P+E 400V
VB-S/B	NA

BOX REPLACEMENT



RICAMBIO INTERRUTTORI

Codice Code	Interruttore magnetotermico Magnetotermic Switch
W2600005	Int. 0,63/1A
W2600008	Int. 2,5/4A
W2600009	Int. 4/6,3A
W2600010	Int. 6,3/10A
W2600011	Int. 10/16A
W2600012	Int. 16/20A
W2600013	Int. 20/25A

SWITCH REPLACEMENT

RICAMBIO SGANCIATORI

Ricambio sganciatori Releaser replacement	Descrizione Description
W2680030	Bobina di minima 230V <i>Minimum reel 230V</i>
W2680031	Bobina di minima 400V <i>Minimum reel 400V</i>

RELEASER REPLACEMENT

